



LCP50

Retractable locating pin unit

L	C	P	5	0	0	5	0	U	A	E	R
1	2	3	4		5	6	7	8			

1 Series	2 Version	3 Size
-----------------	------------------	---------------

LC = Retractable locating pin unit

P = Pneumatic

50 = \varnothing 50 mm

4 Strokes	5 Sensing style	6 Rod end style
------------------	------------------------	------------------------

015 = 15 mm

025 = 25 mm

040 = 40 mm

050 = 50 mm

060 = 60 mm

075 * = 75 mm

100 * = 100 mm

110 * = 110 mm

* special strokes, with electronic sensor only

D = Pneumatic sensor with double air supply

N = No sensor (with protection plate)

U = Electronic 24 Vdc sensor with M12 swivel connector

A = Rod for off-set pins

B = Rod with profiled ends

C = Rod with cross-profiled ends

D = Rod for off-set pins with oversize dowel holes

7 Rod orientation only with A and D rod end styles	8 Rod scraper
--	----------------------

E = east, standard



O = west



N = north

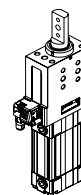


S = south

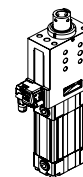


R = Rod scraper in stainless steel

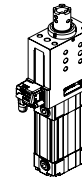
Rod end style



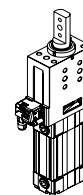
Type A



Type B



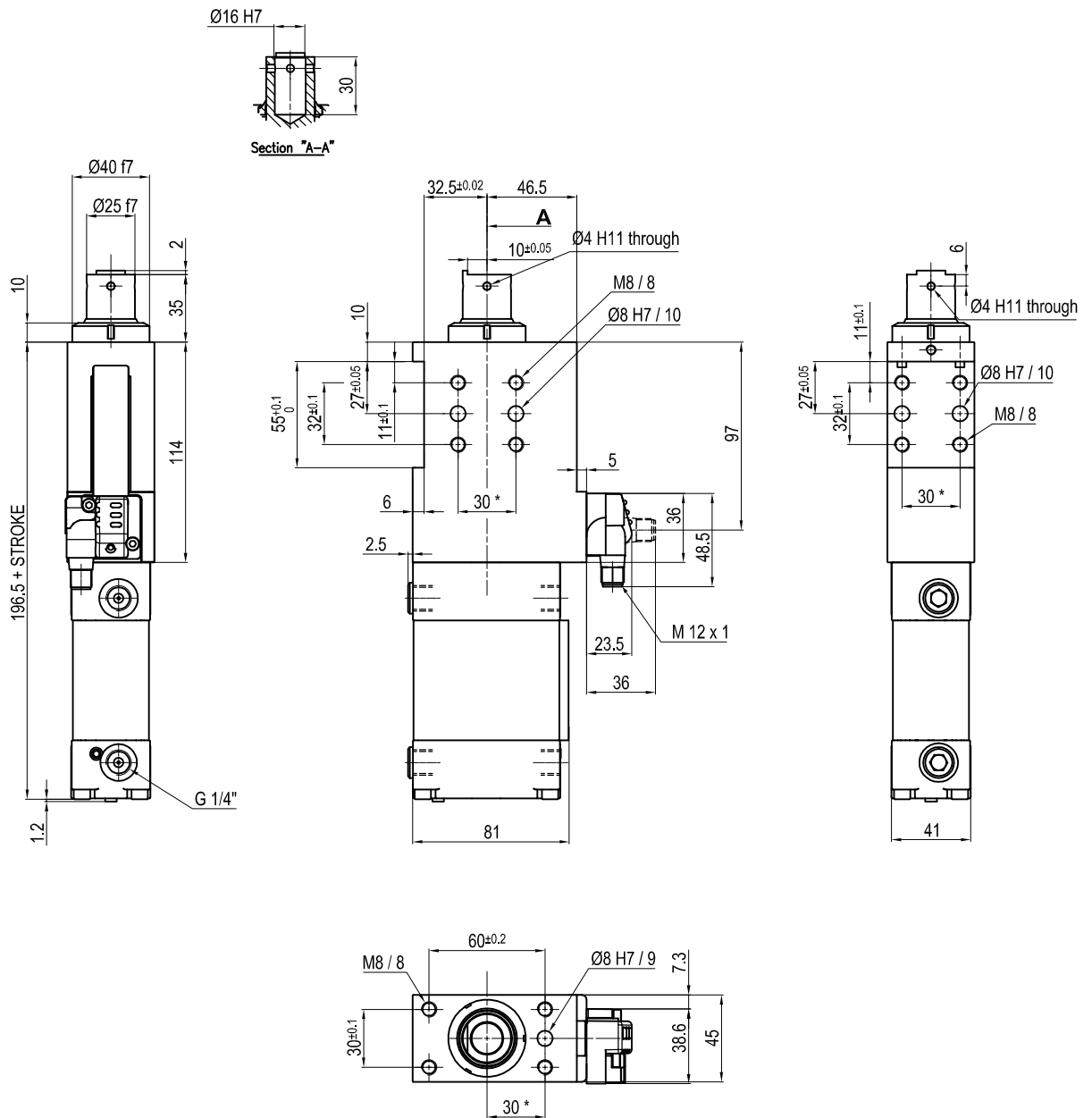
Type C



Type D



Pneumatic retractable locating pin unit



Bore Ø	Max. radial thrust	Max. axial thrust at 0.5 MPa	Max. torque	Max. deflection moment	Max. rotating on the rod	Max. deflection angle	Weight
50 mm	150 N	700 N	6 Nm	7.5 Nm	±0.03°	±0.03°	2.3 Kg

* : TOLERANCE BETWEEN DOWEL HOLES ± 0.02, TO SCREW HOLES ± 0.1

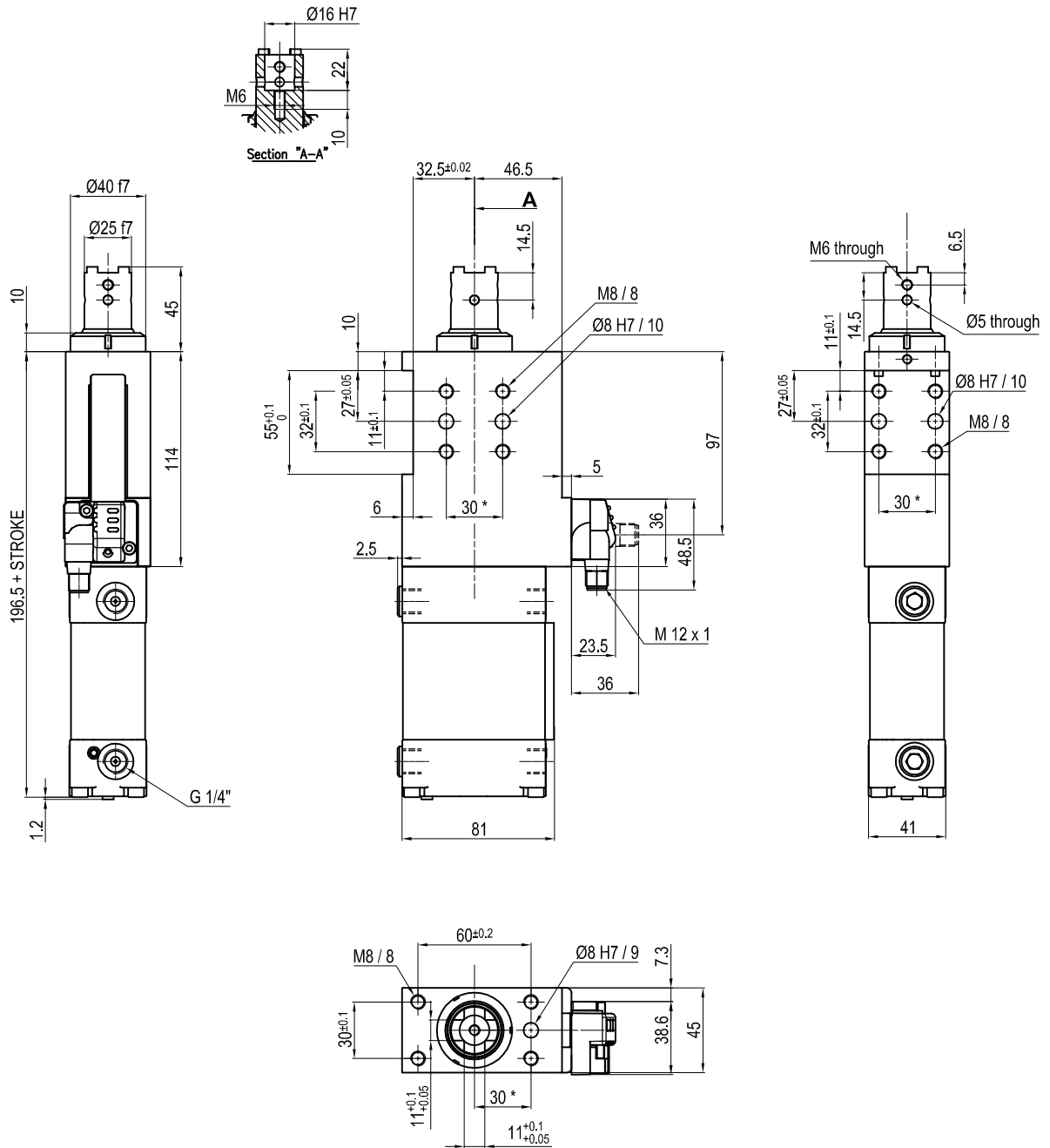
Min./max. operating pressure: **0,4 / 0,8 MPa**
 Operating temperature: **5° + 45° C**
 Strokes in mm.: **15 - 25 - 40 - 50 - 60**

Electronic 24 Vdc sensor with M12 swivel connector that can be orientated at 0° or 90°

Protection class: **IP 65**
 Pneumatic ports on both sides

Subject to technical modification without notice.

Pneumatic retractable locating pin unit



Bore Ø	Max. radial thrust	Max. axial thrust at 0.5 MPa	Max. torque	Max. deflection moment	Max. rotating on the rod	Max. deflection angle	Weight
50 mm	150 N	700 N	6 Nm	7.5 Nm	±0.03°	±0.03°	2.3 Kg

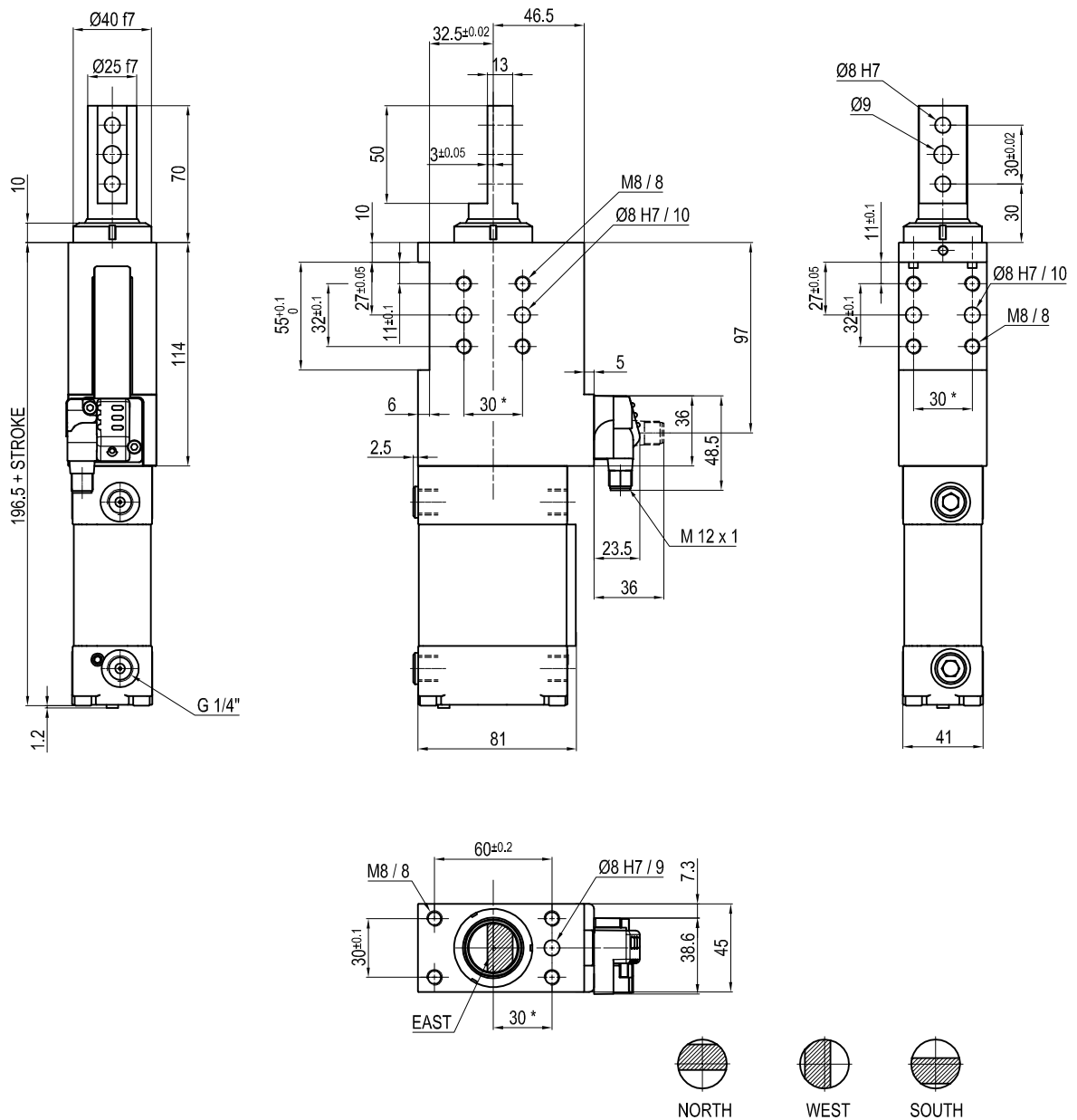
* : TOLERANCE BETWEEN DOWEL HOLES ± 0.02, TO SCREW HOLES ± 0.1

Min./max. operating pressure: **0,4 / 0,8 MPa**
 Operating temperature: **5° + 45° C**
 Strokes in mm.: **15 - 25 - 40 - 50 - 60**

Electronic 24 Vdc sensor with M12 swivel connector that can be orientated at 0° or 90°

Protection class: **IP 65**
 Pneumatic ports on both sides

Pneumatic retractable locating pin unit



Bore Ø	Max. radial thrust	Max. axial thrust at 0.5 MPa	Max. torque	Max. deflection moment	Max. rotating on the rod	Max. deflection angle	Weight
50 mm	150 N	700 N	6 Nm	7.5 Nm	±0.03°	±0.03°	2.3 Kg

* : TOLERANCE BETWEEN DOWEL HOLES ± 0.02, TO SCREW HOLES ± 0.1

Min./max. operating pressure: **0,4 / 0,8 MPa**
 Operating temperature: **5° + 45° C**
 Strokes in mm.: **15 - 25 - 40 - 50 - 60**

Electronic 24 Vdc sensor with M12 swivel connector that can be orientated at 0° or 90°

Protection class: **IP 65**
 Pneumatic ports on both sides

Subject to technical modification without notice.